



GEOTECHNICAL AND DRILLING INSTRUMENTS

Waldemar Szkurlat

founded in 1934



Window sampling set RKS (impact sampling)

Application:

Window and windowless sampling can be used in all soil conditions for undisturbed samples. Window Sampling sets RKS are for professionals who regularly drill, sample or who are involved in mineral exploration in hard soils which may contain rubble and/or stones or who are working in difficult to access sites. To operate the device just one or two people are needed.

Maximum depth of sampling depends on the depth of ground water level, and its up to 4 m below that level.

Complete kit contains:

- 1 - combustion percussion hammer
- 2 - adapter connecting hammer and rods
- 3 - rods
- 4 - window sampler
- 5 - table for rod extruder (optional)
- 6 - base of lever extruder (optional)
- 7 - ball clamp (optional)
- 8 - fork wrench (optional)

Specification:

- Window sampler :
- external diameter \varnothing 36 mm, 40 mm, 50 mm, 60 mm, 80 mm
 - length of the core 1 or 2 m, whole sampler + 173 mm
 - removable knife strengthened, hardened, made of high quality alloy steel
 - breaker of core is made from steel or PVC
 - cutting knife is welded
 - M22 nipple

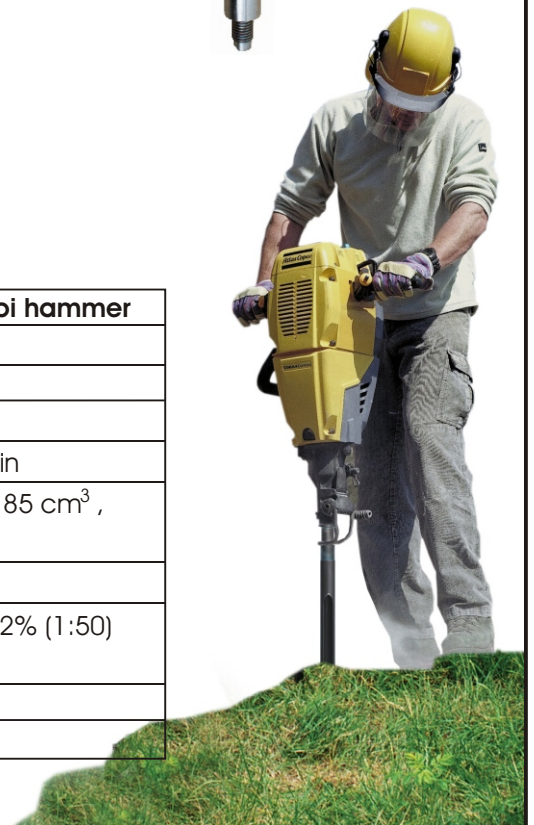
- Rods:
- \varnothing 36 mm, length 1 m, nipple M22
 - full or hollow
 - scaled every 10 cm

- Adapter:
- Cobta TT - nucle H 32x 160 mm, nipple M22
 - Cobra Standard, Combi - nucle H 22x 108 mm, nipple M22

Breaker spring



	Cobra TT hammer	Cobra Combi hammer
Weight	25 kg	25,5 kg
Length	927 mm	694 mm
Impact energy	40 J	24 J
Frequency of impacts	720 - 1 620 impacts/min	2600 impacts/min
Engine	Double-acting, 90 cm ³ , air-cooled	Double-acting, 185 cm ³ , air-cooled
Power	1300 W	2000 W
Fuel	Gasoline, blend 2% (1:50) Atlas Copco oil	Gasoline, blend 2% (1:50) Atlas Copco oil
Tank capacity	1 liter	1,2 liter
Fuel consumption	1,3 l/hour	1,4 l/hour



05-077 WARSZAWA - WESOŁA, ul. Szosa Lubelska 4

tel./fax: (+48) 22 773 39 32; 22 773 37 78

e-mail: biuro@szkurlat.com.pl

www.szkurlat.com.pl



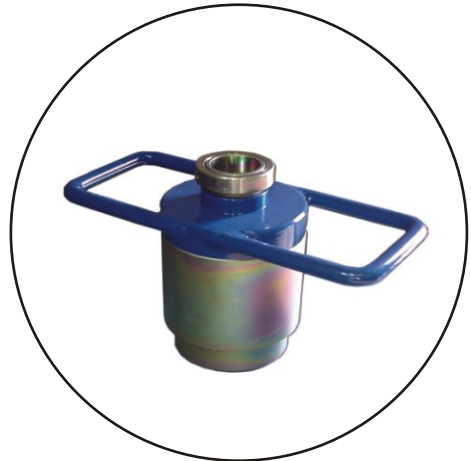
Hammer

Slit sampler

Window sampler

Adapter connecting hammer and rods

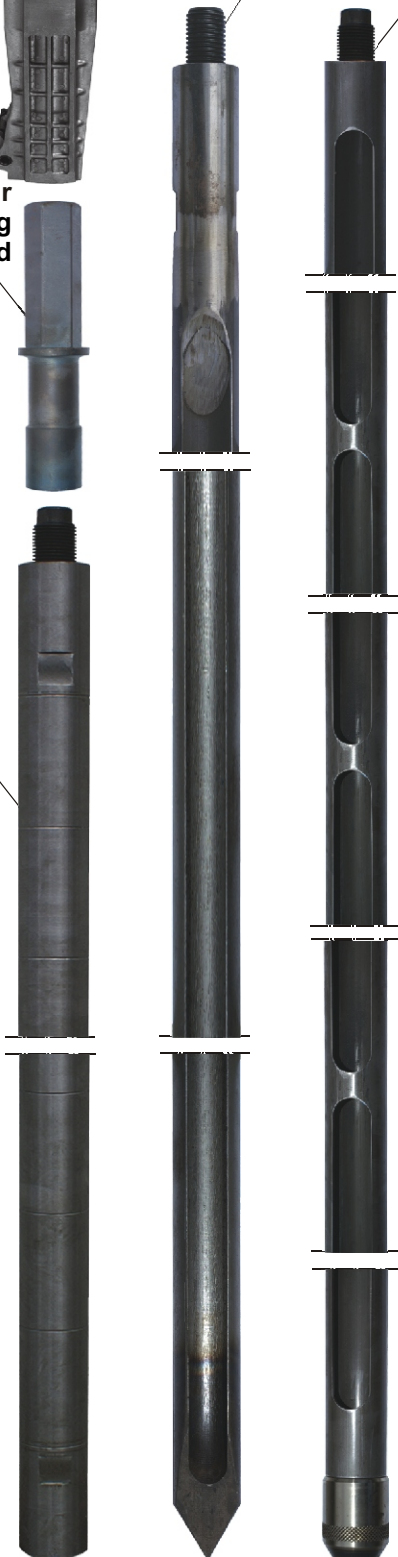
Rod



Ball clamp



Base of lever extruder



Cutting knife



Table for rod extruder